

### **Notice Inviting Tender**

Amateur Kabaddi Federation of India (AKFI) intends to purchase Uniforms for Director Competition / Competition Manager / Technical Officials / Jury of Kabaddi in 37<sup>th</sup> National Games GOA.

Approx Quantity: 55 Kits

Each Kit will have the following tailored as per individual measurements.

- |                |     |
|----------------|-----|
| 1. BLAZER      | – 1 |
| 2. Pants       | – 1 |
| 3. Shirts      | – 2 |
| 4. Tie / Scarf | – 1 |

**As per Specifications attached.**

Interested parties should submit their best offer inclusive of all taxes in a sealed cover along with samples to Administrator AKFI on E-386 Basement, Cabin 'B' Greater Kailash Part 1 New Delhi – 110 048 so as to reach latest by 20<sup>th</sup> October, 2023 3 p.m.

Tenders will be opened on 21.10.2023 before the parties present at the office of the federation at 5 pm.

AKFI reserves the rights to reject any or all offers without assigning any reason and will not be responsible for late receipt of offer on any account at the office of AKFI.

# Technical Sheet

Specially Crafted  
for

**37<sup>TH</sup>**  
**NATIONAL**  
**GAMES**  

---

**GET SET GOA 2023**



# Product Overview

## Jersey Knit Jacket



Shell Material: Jersey in blue honeycomb with single-way stretch

Weight: 4.0 oz/ sq yds.

Dying: Mill dyed in high jet pressure

Fabric Tension: 4-5

Pantone Shade: Provence | 16-4032 TPX

Lining: Satin polyester (white) 200gm for the body and 100gm for the sleeves

White polyester buttons are sewn with 16 stitches with T-24 core-spun cotton-polyester blend orange color thread.

Button Size: 24L

SPI (stitches per inch): 8-10

Narrow Lapel

Patch Pockets

## Logo



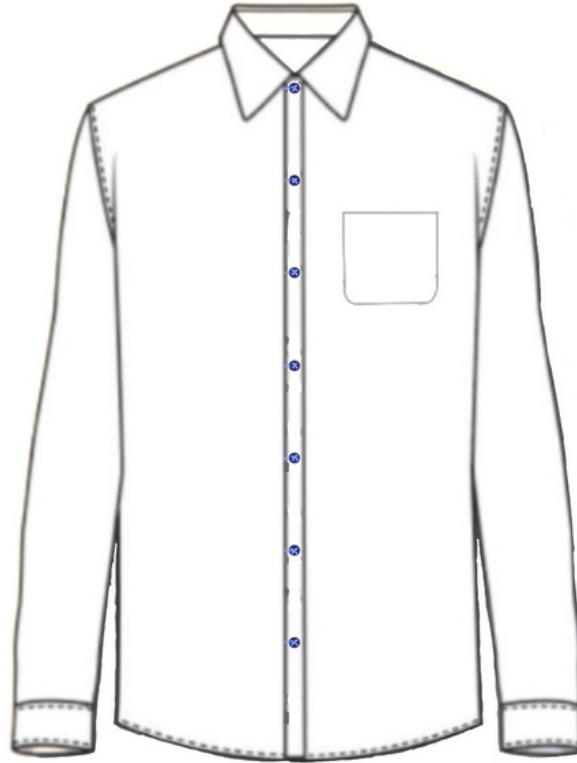
Computerized thread embroidered logo

Length: 5.4cm

Width: 9.8cm

# Product Overview

## White Shirt



Fabric: Cotton Polyester blend. (60-40)

Pantone Shade: Bright White Color | 11-0601 TPG

Weight: 140 to 180 GSM

SPI (stitches per inch): 10-12

Single layered fused interlining for collar, cuff, and placket.

Button Size: 16L

Dark Blue color buttons are sewn with a light blue color single-thread zig-zag double lockstitch.

# Product Overview

## Cotton Chino



Product: Chino

Fabric: Cotton

Weight: 5-7 ounces per yard

Pantone Shade: Dark Blue Color | 19-4035 TPG

Pocketing: White polyester viscose blend in 100gsm

Zipper: YKK zippers

# Product Overview

## Tie



Product: Tie

Fabric: 105 GSM Soft Poly Twill Fabric Printed

Width: 7.5cm

Length: 150cm plus minus 3cm

# Product Overview

## Scarf



Product: Scarf

Fabric: 105 GSM Soft Poly Twill Fabric Printed

Width: 6 to 8 inches

Length: 40 inches